



# ABUNDANT ARCHITECTURE TOUR

QUINCY, IL



## SELF-GUIDED DRIVING TOUR

1939 / ART MODERNE / P. 15

Discover the diverse and awe-inspiring architecture of the city with over 3,600 structures contributing to the National Register of Historic Places.

Abundant Architecture is a self-guided exploration encompassing 48 significant properties in the city of Quincy, including an East End Historic District Walking Tour spotlighting 18 homes.

## 30+ ARCHITECTURAL STYLES REPRESENTED

art deco art moderne arts & crafts  
bungalow byzantine colonial monterey  
colonial revival eastlake english tudor  
federal folk victorian french second empire  
georgian revival greek revival  
international modernism italianate lustron  
mediterranean mid-century modern mission  
moorish revival neoclassical revival  
prairie school queen anne  
richardsonian romanesque  
shingle style queen anne shotgun tudor revival  
venetian gothic revival victorian

enjoy

illinois

SEQUINCY

# WELCOME to the robust architectural scene of the Gem City!

The city of Quincy has some of the most impressive architecture of any community in Illinois, presenting an unrivaled portfolio of styles and well preserved structures, with **four National Register Historic Districts**.

From Quincy's earliest days of development, a remarkable number of pre-Civil War buildings exist today. Many Federal and Greek Revival style homes and commercial structures built as early as the 1830s can be found in and around the core of the city's **Downtown Historic District**.

German immigrants helped shape Quincy's unique cultural background and influenced building styles and craftsmanship in the area known as the **South Side German Historic District**.

As Quincy experienced its greatest periods of growth from 1850-1880, and again in the late 1890s, the population began to move north of the downtown into larger homes to the **Northwest Historic District**.

During the latter part of this period, expansion occurred directly to the east of the downtown area. The stately mansions and large high-style homes of the east end of the city may be the most memorable Quincy buildings. Every architectural style popular within the United States during the Civil War through the turn of the century can be found in what is now known as the **East End Historic District**.

National architectural movements continued to influence the designs of buildings constructed in Quincy during the first half of the 20th century. The Prairie style and Craftsman bungalows are prolific throughout the city, as well as a large stock of magnificent Mid-Century Modern structures.

The array of styles throughout Quincy are so extraordinary it's impossible to capture all of them in one guide. You'll see a boat club moved by barge in the early 1900s, a 20,000-square-foot mansion built with a basement bowling alley, and a 1948 Lustron pre-fab enameled steel home.

The guide explores 48 properties in all, 18 of which are incorporated in a self-guided walking tour of the East End.

Want to bike the city? **BikeQuincy** offers **free rentals**. Two Treks or a tandem available > SeeQuincy.com / 532 Gardner Expy / Reservations recommended: CALL 800.978.4748 or TEXT 217.242.3728.

## INDEX

	PAGE
DRIVING TOUR MAP + LIST OF PROPERTIES.....	1
PROPERTIES 1-18 .....	3-8
WALKING TOUR / FAMOUS 4 CORNERS .....	9-10
WALKING TOUR MAP .....	11-12
PROPERTIES 19-30 .....	12-16
PRIVATE HOME TOURS .....	back cover

Front cover photo courtesy > Amanda Van Ness

## ABOUT THE FEATURED LOCAL ARCHITECTS

[page numbers are noted to correlating structures highlighted in the guide]

### BATSCHY, John

One of Quincy's most important architects, Batschy was Swiss-born and designed the pilot house for Park Place, Quincy's first covenant subdivision established in 1888. [#14, p. 7]

### BAUHAUS & ZWICK

The Bauhaus-Zwick Construction Company left a distinctive mark on the Quincy architectural landscape most notably with the arresting collection of five Art Moderne homes they designed in 1939 [#26 p. 15].

### BEHRENSMEYER, Charles

Nephew to George Behrensmeyer, Charles provided the transition locally to architecture of contemporary times. He unleashed a folio of designs in a pure Moderne Style. The stucco and steel home at 2210 Aldo Boulevard [#8, p. 12] is arguably one of Charles' highest profile structures in Quincy. Charles recruited John Benya from St. Louis for assistance to keep astride the housing boom post WWII.

### BEHRENSMEYER, George P.

Quincy's first academically trained architect, George returned from the University of Illinois armed with the Colonial Revival style. However, his first commission would be the Villa Kathrine, a Mediterranean castle on the Quincy bluffs in 1900 [#1, p. 3]. George fashioned his own residence at 333 East Avenue in the Prairie School style, and he and his business partner, Wilbert Hafner, designed much of the detailing for the original Quincy Senior High School [#15, p. 7].

### BENYA, John

Known as an imaginative modernist, Benya designed more than 500 cutting edge buildings across the country. His works included several of Quincy's most prominent public spaces and remain some of the most admired buildings in western Illinois today, with the futuristic Quincy Regional Airport terminal a definite coup in his portfolio [#30, p. 16]. For a deeper dive into Benya designs, see the Mid Mod Quincy Guide at SeeQuincy.com.

### BUNCE, Robert

Considered by many the "true father" of Quincy's architecture, Bunce arrived in about 1867 after a short tenure in Chicago and was directly or indirectly responsible for scores of elaborate Italianate commercial blocks in Quincy. His talents were far-reaching as seen in his 1870 Moorish design of the Temple B'Nai Sholom [#21, p. 13] and his impression would endure through his own works as well as those of his apprentice, Harvey Chatten.

### CHATTEN, Harvey

Quincy native who ushered the Queen Anne Style to its greatest local realization and was responsible for the majority of Romanesque Revivals in Quincy. Chatten's powerhouse portfolio includes structures like the Poling House [#11, p. 11-12] and the Newcomb-Stillwell Mansion, collaborating with Ernest Wood, whom he trained.

### GEISE, Martin

One of the most prolific architects in Quincy with a vast range of commercial and residential contributions from the early 1900s-1940s. Geise's portfolio spanned styles from Prairie School in his personal residence [#9, p. 11-12] to Art Deco in the 1940 Coca-Cola Bottle Company building at 616 N 24th Street.

### HORN, Frank

Partner of a leading architectural firm with Charles Behrensmeyer, Horn was responsible for some of the most recognized buildings in the tri-state area. His unique flair is evident in a sprawling 1969 one-story home built in the heart of the East End Historic District behind a stone privacy wall [#13, p. 12].

### McKEAN, John S.

After relocating to Quincy in 1874, McKean designed four of the city's High Victorian monuments including Salem Evangelical Church [#10, p. 6]. He mastered the French Second Empire style in one of the most regal homes on Maine Street [#18, p.8].

### WOOD, Earnest M.

Wood was one of the first Quincy architects to work in the Prairie School and became the leading practitioner of the style locally. He designed his downtown Quincy office and studio in 1912 [#8, p. 5]. A notable feat by Wood remains gracefully in service today at 1600 S 8th Street—the Stone Arch Bridge, c. 1899.

# Self-Guided DRIVING TOUR MAP

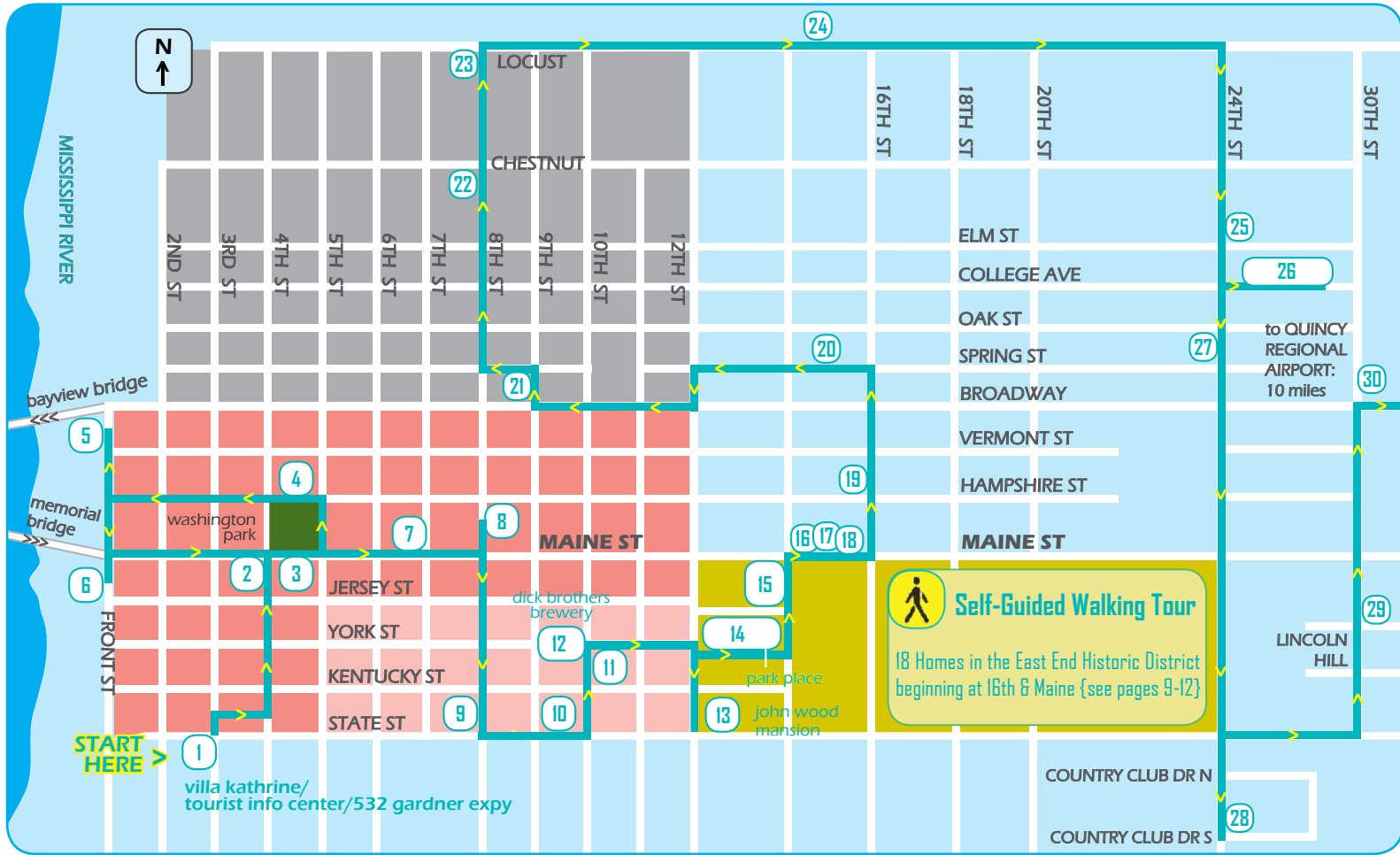
NORTHWEST

DOWNTOWN  
"THE DISTRICT"

SOUTH SIDE  
GERMAN

EAST END

[Four National Register Historic Districts]



The Driving Tour includes a total of 48 stops > > >

18 are grouped together in the East End Walking Tour  
(beginning on page 9)

- 1 VILLA KATHRINE / 532 GARDNER EXPRESSWAY
- 2 HISTORY MUSEUM ON THE SQUARE / 332 MAINE
- 3 STATE SAVINGS & LOAN TRUST COMPANY / 428 MAINE
- 4 WASHINGTON THEATRE / 427 HAMPSHIRE
- 5 QUINCY BAYVIEW BRIDGE / WESTBOUND US HIGHWAY 24
- 6 NORTH SIDE BOAT CLUB / 200 NORTH FRONT ST
- 7 ST BONIFACE CHURCH / 117 N 7TH
- 8 ERNEST WOOD OFFICE & STUDIO / 126 NORTH 8TH
- 9 THE STATE THEATRE / 434 S 8TH
- 10 SALEM EVANGELICAL CHURCH / 437 S 9TH
- 11 TRAPP ROW / 303-321 SOUTH 10TH
- 12 DICK BROTHER'S BREWERY / 9TH-10TH & YORK ST
- 13 JOHN WOOD MANSION / 425 S 12TH
- 14 PARK PLACE / SOUTH 12TH-14TH NEAR YORK ST
- 15 QUINCY JUNIOR HIGH SCHOOL / 100 S 14TH

- 16 ISAAC & ELLEN LESEM HOUSE / 1449 MAINE
- 17 JONATHAN PARKHURST HOUSE / 1461 MAINE
- 18 DRICUS & FANNY SNITJER HOUSE / 1469 MAINE
- 19 UNITARIAN CHURCH / 1479 HAMPSHIRE
- 20 HENRY AND JOSEPHINE FREIBURG HOUSE / 1431 SPRING
- 21 TEMPLE B'NAI SHALOM / 427 NORTH 9TH
- 22 SAINT ROSE OF LIMA ROMAN CATHOLIC CHURCH / 1003 NORTH 8TH
- 23 LORENZ AND SUZANNE WOELFEL SALOON / 1539 N 8TH
- 24 MONCKTON MANSION / 1419 LOCUST
- 25 LUSTRON HOME / 2409 ELM
- 26 ZWICK ROW / 2428-2444 COLLEGE AVE
- 27 EARNEST CHATTEN HOUSE / 2336 OAK ST
- 28 KUNA HOUSE / 2409 COUNTRY CLUB DRIVE SOUTH
- 29 CERVON HOUSE / 3001 LINCOLN HILL NE
- 30 QUINCY REGIONAL AIRPORT TERMINAL / 1605 HWY 104



1

**VILLA KATHRINE** / 532 GARDNER EXPRESSWAY / 217.224.3688 / [thevillakathrine.org](http://thevillakathrine.org)

- > Built for Quincy native George Metz, who sketched the design on his travels
- > Modeled after the Villa Ben Ahben in Morocco; built on the Mississippi bluffs
- > Now a touring museum, Quincy's Tourist Info Center & SeeQuincy offices

1900 / MEDITERRANEAN / GEORGE BEHRENSMEYER architect



4

**WASHINGTON THEATRE** / 427 HAMPSHIRE / 217.228.4515

- > 1,480-seat theatre built for stage & cinema showings
- > Quincy's first talking motion picture was shown here in 1928
- > The only strong 1920 period piece to be found in Quincy's downtown

1924 / MEDITERRANEAN & BYZANTINE / E.P. RUPERT architect



2

**HISTORY MUSEUM ON THE SQUARE** / 332 MAINE / 217.214.1888 / [hsqac.org](http://hsqac.org)

- > Limestone structure, originally Quincy's first public library
- > Beautifully fitted to its corner location by a 3-story tower that overlooks historic Washington Park

1888 / ROMANESQUE REVIVAL / PATTON & FISHER architects  
1929 / STUCCO ADDITION / ERNEST WOOD architect



5

**QUINCY BAYVIEW BRIDGE** / WESTBOUND US HIGHWAY 24

- > An early cable stay bridge for the U.S., unique at the time with a combination of prefabricated steel and precast concrete sections
- > Built at a cost of \$32 million and a total length of 4,507 feet
- > Quad-color technology lighting system installed in 2015

1987 / MODJESKI & MASTERS engineers



3

**STATE SAVINGS & LOAN TRUST COMPANY** / 428 MAINE

- > Built for bankers Lorenzo and Charles Bull with Romanesque detail
- > Constructed of Missouri granite; original bank vaults still intact today

1892 / PATTEN & FISHER arch + 1906 addition / ERNEST WOOD architect



6

**NORTH SIDE BOAT CLUB** / 200 NORTH FRONT ST

- > The club's first building, located on Bay Island, was completed in 1896, then moved by barge to the present location and redesigned in 1909

1909 / MISSION INFLUENCE FACADE by MARTIN GEISE architect





7

### ST BONIFACE CHURCH / 117 N 7TH

- > Magnificent terrazzo floors & stone walls / 160-ft steel steeple
- > Listed on the 150 most significant structures in Illinois
- > Built on the site where Augustine Tolton's first Solemn High Mass occurred in Quincy upon his return as America's first African-American Priest

1962 / MID-CENTURY MODERN / JOHN BENYA architect



10

### SALEM EVANGELICAL CHURCH / 437 S 9TH

- > Built primarily for its German congregation in Quincy's South Side
- > Fashioned in a typical German "Hallkirche" design—a hall church with nave and side aisles of approximately equal height, lit through windowed side walls typically spanning the full height of the interior

1877 / VICTORIAN GOTHIC / JOHN MCKEAN architect



8

### ERNEST WOOD OFFICE & STUDIO / 126 NORTH 8TH

- > Illustrates the architect's depth of reverence for Frank Lloyd Wright
- > On the National Register of Historic Places

1912 / PRAIRIE SCHOOL / ERNEST WOOD architect



11

### TRAPP ROW / 303-321 SOUTH 10TH

- > Situated on 30-ft lots in "Calftown"—nearly every household possessed a cow
- > A shotgun fired into the house from the front door would fly cleanly out at the back

1889 / SHOTGUN COTTAGES



9

### THE STATE THEATRE / 434 S 8TH

- > Opened Christmas Day with "Alexander's Ragtime Band" starring Tyrone Power, Alice Faye, and Don Ameche; erected by Leo Monckton [see p. 14]
- > Two innovations never before in Quincy: acoustical devices for the hearing impaired and a "crying room" for mothers with babies to still view & hear the show

1938 / ART DECO / CHARLES BEHRENSMEYER architect



12

### BREWERY DISTRICT / DICK BROTHER'S BREWERY / 9TH-10TH & YORK ST

- > The first German migrants settled primarily in Quincy's southeast corner, accumulating approximately 10,500 in number from 1840-1870
- > Many homes in the German Historic District belonged to employees of Dick Brothers Brewery, founded 1857, once larger than Anheuser-Busch
- > Today the brewery complex offers tunnel tours, museum, event spaces, and The Ratskeller [underground bar] / 217.242.9567 / dickbrothersbrewery.com



13

**JOHN WOOD MANSION** / 425 S 12TH / 217.222.1835 / touring museum / hsqac.org

- > 14-room home of Quincy's founder; moved from its original site a block away in 1864
- > Designated as one of 200 Great Places in Illinois by the IL Council of the American Institute of Architects [IllinoisGreatPlaces.com]

1835 / GREEK REVIVAL / JOHN CLEAVELAND builder



16

**ISAAC & ELLEN LESEM HOUSE** / 1449 MAINE

- > Built for a dry goods entrepreneur and noted civic & religious leader
- > Exuberant high-style Queen Anne features of complicated massing and a rich array of surfaces, with an elaborate carriage house in the rear

1890 / QUEEN ANNE / HARVEY CHATTEN architect



14

**PARK PLACE** / SOUTH 12TH-14TH NEAR YORK ST

- > Quincy's first covenant subdivision, consisting of 25 houses
- > Homes were required to be stone or brick and a minimum cost of \$3000
- > Note 1200 Park Place, the subdivision's pilot house, by architect John Batschy

1889-1917 / primarily QUEEN ANNE / BINKERT & CRUTTENDEN developers



17

**JONATHAN PARKHURST HOUSE** / 1461 MAINE

- > Built for co-founder of the Newcomb Hotel and former mayor of Quincy
- > Splendid example of the Italianate style with heavy cornices and decorative dental molding; the current owners have enhanced the grounds with lush landscaping complete with a Fairy garden

1869 / ITALIANATE / architect unknown



15

**QUINCY JUNIOR HIGH SCHOOL** / 100 S 14TH / 217.222.3070

- > Five stories tall, with mosaic details enscripted on the walls
- > Building costs estimated at \$1.3 million in 1929, originally Quincy's Senior High
- > Home of the elaborate Morrison Theatre with a capacity of 2,000

1933 / VENETIAN GOTHIC / JOHN D. CHUBB architect



18

**DRICUS & FANNY SNITJER HOUSE** / 1469 MAINE

- > One of the most photographed houses in Quincy; an elaborate mansard roof its crowning glory
- > Used as a college prep school in 1900 with author Samuel Clemens as a patron

1876 / FRENCH SECOND EMPIRE / JOHN MCKEAN architect



# HISTORIC EAST END SELF-GUIDED WALKING TOUR

## BEGINNING AT 16TH & MAINE QUINCY'S FAMOUS FOUR CORNERS

Once deemed "one of the ten most architecturally-significant corners in the U.S." by National Geographic Magazine, the corner of 16th & Maine exquisitely displays four prime examples of world class architecture. As you study the details of each property, you'll appreciate both the striking and subtle influences of an array of design features prevalent in the era, beginning in 1852.

The terrain is easy to navigate on foot or bike. BikeQuincy offers free rentals, with a tandem or 2 Treks available / Reservations recommended > SeeQuincy.com 532 Gardner Expy / CALL 800.978.4748 or TEXT 217.242.3728.



# 18-POINT MAP NEXT PAGE > > > >

## LISTED ON THE NATIONAL REGISTER OF HISTORIC PLACES

The East End encompasses the expansive area between 12th and 24th Streets, from Maine Street to State Street. You've experienced some of the grandeur within the driving tour portion—now enjoy paving your way through our meticulously tended avenues. We've featured a total of 18 homes showing off a variety of styles, but you'll spot a hundred more you'll adore.

Street parking is easy & free in this quiet residential neighborhood. You're welcome to park at The Quincy Museum (#3 below) ~it's a magnificent masterpiece we encourage you to tour.



**DAVID W. MILLER HOUSE / 1477 MAINE**

- > Built for David Miller, who owned a nearby hotel, "The Quincy House", accommodating overflow at his residence
- > Two of the last remaining historic gas lamps adorn the south passage, leading the way to the main house
- > Once owned by 1996 presidential hopeful, Morry Taylor

1866 / FRENCH SECOND EMPIRE / MANSARD ITALIANATE



**NEWCOMB-STILLWELL MANSION / 1601 MAINE**

Now The Quincy Museum / 217.224.7669 / thequincymuseum.org

- > 20K sq-ft home built for Richard Newcomb, president of Quincy Paper Co.
- > Originally housed a wine cellar & bowling alley in the basement
- > Newcomb was one of four millionaires in Quincy at the time of his death in 1904; the mansion was passed to his daughter Elizabeth Stillwell

1890 / RICHARDSONIAN ROMANESQUE / ERNEST WOOD & HARVEY CHATTEN arch



**LORENZO & MARGARET BULL HOUSE / 1550 MAINE**

- > Built for a prominent financier in the Italian Villa style with design roots originating in 13-14th century Italian farm houses
- > Today home to the Women's City Club with the original carriage house part of the Quincy Art Center at 1515 Jersey / 217.223.5900 / quincyartcenter.org

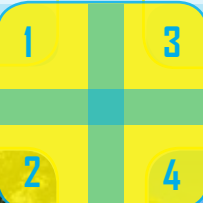
1852 / ITALIANATE / architect unknown



**WILLIAM WARFIELD HOUSE / 1626 MAINE**

- > Built for wholesale grocer, William Warfield
- > Stone imported from Minnesota, with decorative terra cotta ornament molded and fired near Chicago
- > Inspiration for the Newcomb Mansion built four years later

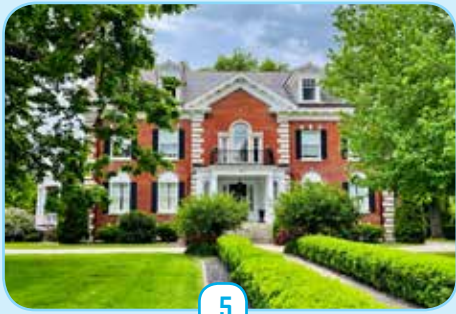
1886 / RICHARDSONIAN ROMANESQUE & QUEEN ANNE / J. LYMAN SYLSBEE arch





## > WALKING TOUR EAST END HISTORIC DISTRICT

[Numbers 1-4 details on previous page]



5



6



7



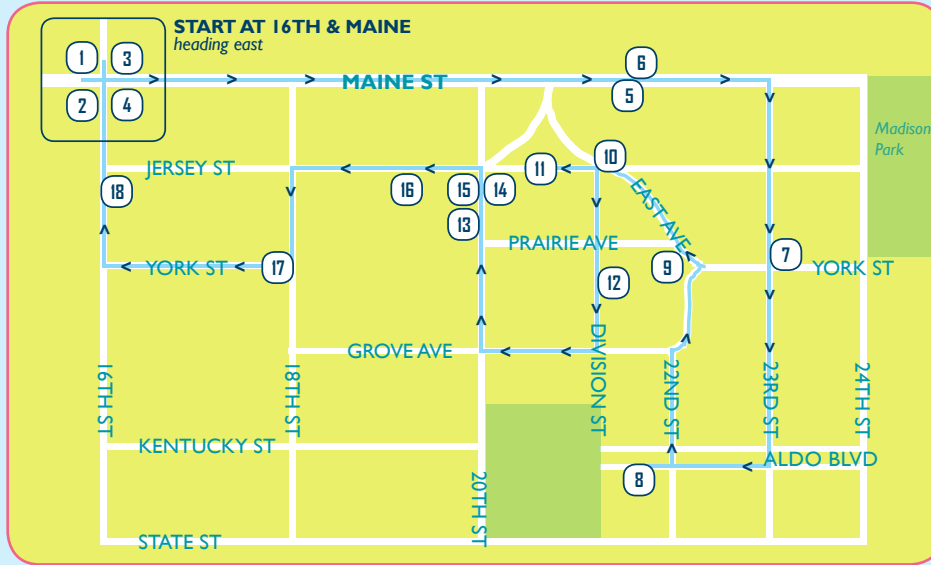
8



18



17



9



10



16



14



15



12



13



11

5 2084 MAINE / 1910 / NEOCLASSICAL REVIVAL

6 2085 MAINE / 1893-94 / SHINGLE STYLE QUEEN ANNE

7 2301 YORK / COLONIAL MONTEREY

8 2210 ALDO BLVD / 1939 / ART MODERNE / CHARLES BEHRENSMEYER arch

9 300 EAST AVE / 1917 / PRAIRIE-CRAFTSMEN / MARTIN GEISE arch

10 2111 JERSEY / 1917 / COLONIAL REVIVAL

11 2016 JERSEY / 1890 / HARVEY CHATTEN arch  
[the centerpiece of the city's first "garden" addition, following the terrain's winding fashion]

12 311 DIVISION / 1936 / ENGLISH TUDOR

13 220 S 20TH / 1969 / RANCH / FRANK HORN arch

14 2000 JERSEY / 1907 / GEORGIAN REVIVAL / EARNEST WOOD arch

15 1850 JERSEY / 1913 / GEORGE BEHRENSMEYER arch

16 1840 JERSEY / 1928-29 / MEDITERRANEAN ECLECTIC

17 300 S 18TH / 1895 / QUEEN ANNE/ HARVEY CHATTEN arch

18 205 S 16TH ST / 1878 / ITALIANATE WITH QUEEN ANNE & EASTLAKE DETAILING





19

### UNITARIAN CHURCH / 1479 HAMPSHIRE

- > Very unusual style for church designs & one of the oldest congregations in Quincy
- > Windows are painted rather than stained glass, customary for Unitarian churches

1913 / TUDOR REVIVAL / HARVEY CHATTEN architect



22

### SAINT ROSE OF LIMA ROMAN CATHOLIC CHURCH / 1003 NORTH 8TH

- > An important north side landmark, the pale yellow brick facade is uncommon in Quincy; the prominent bell tower is topped with a copper dome

1911 / VENETIAN GOTHIC REVIVAL / GEORGE BEHRENSMEYER architect



20

### HENRY AND JOSEPHINE FREIBURG HOUSE / 1431 SPRING

- > Freiburg emigrated from Germany in 1856 and began his Quincy business career working as a cobbler before building his own shoe factory in 1882

1879 / FOLK VICTORIAN / architect unknown



23

### LORENZ AND SUZANNE WOELFEL SALOON / 1539 N 8TH

- > First a Bavarian-style beer & boarding house managed by Suzanne Woelfel, known as a shrewd & popular business woman; converted to grocery store in 1915

1885 / QUEEN ANNE / millwork on modern addition crafted in a Germanic theme



21

### TEMPLE B'NAI SHALOM / 427 NORTH 9TH

- > Built in the residential & commercial neighborhood of a thriving Jewish community
- > A 1947 tornado took the original 80-ft high twin minaret-style towers
- > The Quincy B'nai Shalom Congregation dates from 1852; this location in use until 2019

1870 / MODRISH REVIVAL / ROBERT BUNCE architect



24

### MONCKTON MANSION / 1419 LOCUST

- > Built for Charles Savage, manager of Quincy-Toledo Railroad; bought in the 1930s by Leo & Mildred Monckton, purported for Prohibition, gambling & Mafia ties
- > Rumor has it that the Moncktons entertained Al Capone at their Quincy estate

1865 / ITALIANATE / architect unknown



25

### 2409 ELM / One of three Lustron Homes in Quincy / Model MQ2 : "Desert Tan"

- > Prefabricated enameled steel houses developed in the post-World War II era U.S. in response to the shortage of homes for returning G.I.s
- > To find more of these rare structures, visit [lustronlocator.com](http://lustronlocator.com)

1948 / LUSTRON / CARL STRANGLUND industrialist & inventor



28

### KUNA HOUSE / 2409 COUNTRY CLUB DRIVE SOUTH

- > Built for Aladar & Magdalene Kuna; Quincy's most iconic Mid-Mod residence
- > As with Frank Lloyd Wright's Usonian houses, Benya blurred the distinction between indoor & outdoor space

1954 / MID-CENTURY MODERN / JOHN BENYA architect



26

### ZWICK ROW / 2428-2444 COLLEGE AVE

- > Collection of five houses each with captivating Moderne features
- > Wall systems framed with wood and covered by 2.5" reinforced concrete & stucco
- > Leo Zwick lived at 2428 College for over 50 years
- > Zwick Row is a designated Local Historic District

1939 / ART MODERNE / BAUHAUS & ZWICK designers & builders



29

### CERVON HOUSE / 3001 LINCOLN HILL NE

- > Built for Lawrence & Louise Cervon; Lawrence was president of Harris Corp and Broadcast Electronics
- > The only International Modernism home in Quincy
- > Glass feature wall designed to replicate the Northern Lights during rain

1956 / INTERNATIONAL MODERNISM / JOHN BENYA architect



27

### EARNEST CHATTEN HOUSE / 2336 OAK ST

- > Considered by many the architect's most original statement
- > Freeflowing geometry is wrapped with a taut cement skin
- > Private residence today, restored by its current owners

1939 / ART MODERNE / CHARLES BEHRENSMEYER architect



30

### QUINCY REGIONAL AIRPORT TERMINAL / 1605 HWY 104 / 217.885.3285

- > Futuristic terminal—a circle of many circles on a split three-level plan which Benya is said to have sketched on a cocktail napkin around his martini glass
- > Exterior walls are brown toned, half-circle windows separated by upward curving sections of a striking green masonry

1972 / MID-CENTURY MODERN / JOHN BENYA architect



# PRIVATE HOME TOURS OF QUINCY

## Want to get beyond the curb?

Private Home Tours is a custom experience for small groups, featuring a selection of 14 homes in Quincy's East End Historic District, listed on the National Register of Historic Places. The tours are arranged by SeeQuincy and available year-round. Most groups choose 2-4 homes [average tour time per home is 30-45 min].

**\$5/person per home / advance notice required / [SeeQuincy.com](http://SeeQuincy.com) / 800.978.4748**



1461 MAINE



1680 MAINE



166 N 18TH



1843 GROVE



129 EAST AVE



2200 YORK



2220 YORK



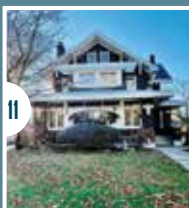
2320 YORK



230 S 24TH



1505 KENTUCKY



310 S 16TH



320 S 16TH



327 S 16TH



218 S 18TH

**Let's begin planning your custom Private Home Tours. We'll handle all the details for you.**

- > ONLINE [SeeQuincy.com](http://SeeQuincy.com)
- > CALL **800.978.4748**
- > TEXT **217.242.3728**
- > EMAIL [info@SeeQuincy.com](mailto:info@SeeQuincy.com)