

family fun!

your guide to

open air energy
nature finds + farms
outdoor culture
indoor discoveries
signature sweets
picnic perfect spots
roadtrip adventures

PLAY we ♥ B-I-N-G-O game on back of guide

watch for our signature
storefront water bowls
around town indicating
pet-friendly stops (40 in all)



enjoy

illinois

SEEQUINCY.COM

openairenergy

to play **B-I-N-G-O**,
circle the places
you visit on the
back of the guide



2

B-1 BILL KLINGNER TRAIL 18TH & KOCH'S LN
217.223.7703 quincyparkdistrict.com
> 3-mile asphalt pedestrian trail | N 24th to riverfront

B-2 BOB MAYS PARK 2533 N 18TH | 217.223.7703
quincyparkdistrict.com
> kinetic equipment | walking trails | 18-hole disc golf
> 53 acres of restored prairie with interpretive signage

B-3 BIKE QUINCY 532 GARDNER EXPY 800.978.4748
> 2 treks or a tandem | affordable hourly or daily rates
> reservations recommended seequincy.com

B-4 GARDNER PARK 3RD & LOCUST 217.223.7703
quincyparkdistrict.com
> 3 miles of hand-curated trail maps + detailed grades
> hiking, running + mountain biking

B-5 INDIAN MOUNDS POOL 1400 S 5TH | 217.228.9219
quincyparkdistrict.com
> heated pool | waterslides | geysers | food court

B-6 LINCOLN PARK 1231 BONANSINGA DR
217.223.7703 quincyparkdistrict.com
> skate park | universal access park

B-7 KNIGHTS OF COLUMBUS GOLF COURSE
700 S 36TH | 217.222.4105 quincykofc.org
> kid-friendly course | par 3 | driving range | concessions

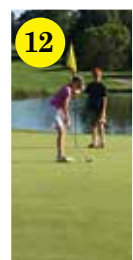
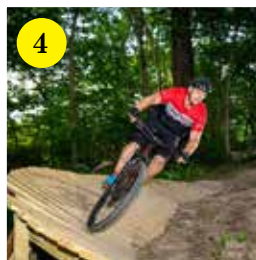
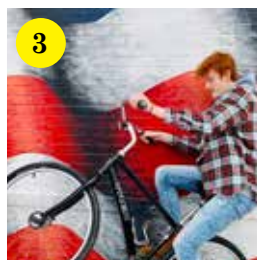
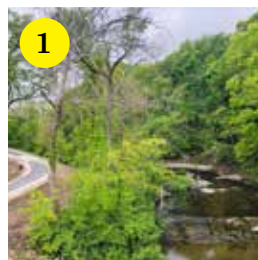
B-8 MOORMAN PARK COMPLEX 1608 MOORMAN PARK
217.228.1261 quincyparkdistrict.com
> paddle boats + kayaks | mini + frisbee golf
> pickleball + volleyball | batting cage

B-9 RESEVOIR PARK 2249 CHESTNUT | 217.223.7703
quincyparkdistrict.com
> 9 lighted tennis courts + historic stone shelter house

B-10 SCOTTIES FUN SPOT 8000 BROADWAY
217.222.3868 scottiesfunspot.com
> mini-golf | go karts | bumper cars | laser tag | roller skating

B-11 SOUTH PARK 1498 S 12TH | 217.223.7703
quincyparkdistrict.com
> thrive outdoor fitness equipment | 20 stations | 135 acres

B-12 WESTVIEW GOLF COURSE 2150 S 36TH
217.223.7499 westviewgolf.com
> 27-hole course | player's grill onsite



nature finds + farms



12



1



2



3



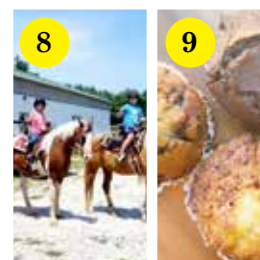
4



5



7



8



9



11

- I-1 AUTUMN MOON FAMILY FARM** 122 E MILL ST
MENDON | 217.779.7934 autumnmoonfamilyfarm.com
> pumpkin patch | kid-friendly old-fashioned games
> field trips | bonfires
- I-2 BOB BANGERT PARK/QUINCY RIVERFRONT**
1925 BONANSINGA DR quincyparkdistrict.com
> wetland | summer nature programs
> boat ramp | shore fishing
- I-3 EDGEWOOD ORCHARDS** 1628 EDGEWOOD
ORCHARD LN | 217.223.2208 edgewoodorchards.com
> pears, gala apples, jellies, pies + weekend apple cider slushies
- I-4 FALL CREEK SCENIC OVERLOOK**
1130 N 223RD LANE | PAYSON
> 1855 historic stone arch bridge (pedestrian traffic)
> scenic overlook of the Mississippi River Valley + flood plain
> 223 acres of woods, creek, waterfalls, wildlife
- I-5 *FOUR WINDS FARM** 3729 N 36TH | 217.257.1480
four-winds-farm.com
> 6-generation 1870s family farm + theme gardens
> organic herbs, vegetables, fruit and flowers
> teaching center: medicinal, culinary and wild edible herbs
* adjoins terripin farms
- I-6 LOCK & DAM 21** 909 W LOCK & DAM RD
217.222.0918 dnr.state.il.us
> wildlife observation deck | seasonal bald eagles
- I-7 MILL CREEK FARM** 2833 S 48TH | 217.222.8430
millcreekfarmquincy.com
> pumpkin-picking | corn maze
> fresh-picked produce | hayrides
- I-8 PORCHER'S ROCK CREEK STABLES**
5028 W SAINT ANTHONY RD | 217.242.2200
> riding lessons, training + special trail riding events
- I-9 QUINCY FARMERS MARKET** WASHINGTON PARK
4TH & MAINE thedistrictquincy.com
> May-Oct | 8a-1p Saturdays
- I-10 QUINSIPPI ISLAND** 1100 QUINSIPPI ISLAND RD
(cross bridge at Front & Cedar) quincyparkdistrict.com
> unique island park + beach | white egret nesting area
- I-11 SPRING VALLEY TRAILS & ARBORETUM**
1301 S 48TH | 217.224.6500 jwcc.edu
> walking trail (southeast side of campus)
> wildflower + butterfly gardens
- I-12 *TERRIPIN FARMS** 3729 N 36TH | 217.440.4678
terripinfarms.net * adjoins Four Winds Farm
> 2-acre sunflower maze + beautiful photo opps
> farm stand: fresh vegetables, fruit, eggs, honey, herbs, jams, cut flowers (pay in the honor box, sun-up to sundown)

outdoor culture

2

N-1 DRIVE THE 5 TOLTON SITES self-guided driving tour
 > sites associated with Augustine Tolton, America's first African-American priest | easy + educational
 > call or download guide seequincy.com | 800.978.4748

N-2 EDUCATION SCULPTURE SERIES 217.222.3432
artsquincy.org (download sculpture map)
 > *Vault* | QUINCY SENIOR HIGH | 3322 MAINE
 > *Flyers* | THOMAS S. BALDWIN ELEMENTARY | 3000 MAINE
 > *Cosmic Clockwork* | QUINCY JUNIOR HIGH | 100 S 14TH
 > *Reaching for the Sky* | QUINCY NOTRE DAME | 1400 S 11TH
 > *Birds of a Feather* | LINCOLN-DOUGLAS ELEMENTARY | 3211 PAYSON RD
 > *Taking Flight* | SARAH ATWATER DENMAN ELEMENTARY | 4100 HARRISON
 > *Sudden Shift* | DR. ABBEY FOX ROONEY ELEMENTARY | 4900 COLUMBUS RD
 > *Red Tails* | COL. GEORGE J. ILES ELEMENTARY | 3111 N 12TH

N-3 IL VETERAN'S HOME 1707 N 12TH | 217.222.8641
quincyivh.org
 > "the city within the city" due to its size and unique set-up
 > 25+ buildings totaling one million square feet and 210 acres
 > equipped with its own post office, bank, assembly hall, guest house, chapel, cemetery, lake, animal park, museum, and military-related historical sites

N-4 INDIAN MOUNDS 1500 S 15TH | quincyparkdistrict.com
 > Native American burial grounds
 > interpretive trail tracing the region's history from the last ice age to the arrival of Europeans

N-5 KESLER PARK 800 BONANSINGA DR | quincyparkdistrict.com
 > flood stages interpretive markers
 > 3-panel wooden deck explains Quincy bay wildlife and the historical uses of the bay

N-6 LOG CABIN VILLAGE 1100 QUINSIPPI ISLAND RD
 (cross bridge at Front & Cedar Streets) quincyparkdistrict.com
 > Lincoln-era log structures
 > unique island park on 130 acres

N-7 MURAL FIND + DINE self-guided driving tour
 > exploration of 24 diverse city murals + nearby eats & sips
 > call or download guide seequincy.com | 800.978.4748

N-8 WASHINGTON PARK 5TH & MAINE thedistrictquincy.com
 > 1858 Lincoln-Douglas Debate site | Lincoln storyboards
 > free blues concerts | Jun-Aug | 2nd & 4th Fridays
 > farmers market | May-Oct | 8a-1p Saturdays



indoor discoveries

2

G-1 1930s AG MUSEUM 1435 BOY SCOUT RD | 217.430.9250
> private collection 40+ John Deere implements
> educational video | appt only

G-2 ALL WARS MUSEUM 1707 N 12TH | 217.222.8641
quincyivh.org
> 5,000 + United States military artifacts
> on the grounds of Illinois' oldest veterans home

G-3 DICK BROTHER'S BREWERY MUSEUM
9TH & YORK | 217.224.9892 dickbrothersbrewery.com
> rare memorabilia of the brewery once larger than Anheuser-Busch + gift shop | group tunnel tours by appt

G-4 EELLS HOUSE 415 JERSEY 217.223.1800
> Underground Railroad stop; home of leading abolitionist

G-5 THE HISTORY MUSEUM ON THE SQUARE
332 MAINE | 217.214.1888 hsqac.org
> Quincy area artifacts | stained glass gallery | gift shop

G-6 KROC CENTER 405 VERMONT | 217.222.5762
krocquincy.org (day passes available)
> rock climbing wall | aquatic center | wild water slide

G-7 LINCOLN-DOUGLAS DEBATE INTERPRETIVE CENTER 128 N 5TH | 217.228.8696 hsqac.org
> across from Washington Park, the 1858 debate site

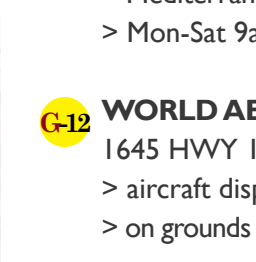
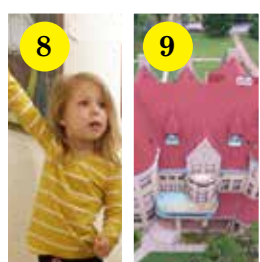
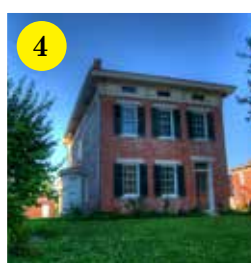
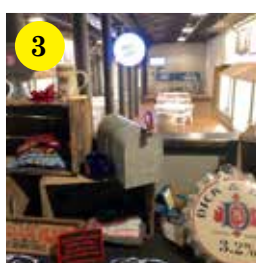
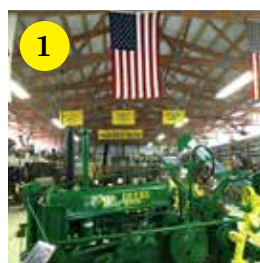
G-8 QUINCY ART CENTER 1515 JERSEY | 217.223.5900
quincyartcenter.org
> cool art gallery in a carriage house | hands-on classes

G-9 QUINCY MUSEUM 1601 MAINE | 217.224.7669
thequincymuseum.org
> millionaire mansion | 14-karat gold woodwork
> rotating exhibits | gift shop with American Girl Dolls

G-10 QUINCY PUBLIC LIBRARY 526 JERSEY | 217.223.1309
quincylibrary.org | archive.quincylibrary.org
> wide variety of programming throughout the year
> digital Quincy newspaper archives from 1835-1970

G-11 VILLA KATHRINE + QUINCY'S TOURIST INFO CTR
532 GARDNER EXPY | 217.224.3688 thevillakathrine.org
> Mediterranean castle on the Mississippi | self-guided tours
> Mon-Sat 9a-5p | Sun 1-5p (closes at 4p daily, Nov-Feb)

G-12 WORLD AEROSPACE MUSEUM/QUINCY AIRPORT
1645 HWY 104 | 217.885.3800 jet-warbirds.com
> aircraft displays (appt only)
> on grounds of Quincy Regional Airport | observation deck/cafe





signature quincy sweets

4 pomegranate janet italian soda pictured

- O-1 BAILEY'S COFFEE & FUDGE** 3024 BROADWAY | 217.231.3834
- O-2 BROADWAY NUTRITION** 700 MAINE | 217.214.5051
- O-3 CARTER'S COFFEE BAR** 3815 MAINE | 217.214.4563
- O-4 ELECTRIC FOUNTAIN BREWING** 625 MAINE | 217.214.9321
- O-5 GENGENBACHER'S SHAVED ICE** 36TH & BROADWAY
217.257.5670
- O-6 GROWN-N-GATHERED** 601 MAINE 217.615.0716
- O-7 ICE SCREAM** 618 MAINE 217.316.6491
- O-8 KRAZY CAKES** 512 HAMPSHIRE | 217.222.2253
- O-9 POPP'N ON MAINE** 917 MAINE | 217.214.7670
- O-10 ROSCOE & VINNIE'S SHAVED ICE** 1720 NORTH 12TH
- O-11 SIDELL'S BAKERY** 33RD & BROADWAY | QUINCY MALL
217.209.3254
- O-12 SPI-ROLLS FRESH ROLLED ICE CREAM**
3300 BROADWAY | QUINCY MALL | 217.242.1754
- O-13 SWEET TWEETS food truck** 4505 BROADWAY 217.430.4446
- O-14 THYME SQUARE CAFE** 615 HAMPSHIRE | 217.228.2292
- O-15 UNDERBRINK'S BAKERY** 1627 COLLEGE | 217.222.1831
- O-16 WINKING'S MARKET** 416 S 4TH | 217.223.4764
- O-17 THE YUM FACTORY, INC** 2449 BROADWAY | 217.209.0177
- O-18 YUMMY'S DONUTS PALACE** 312 N 30TH | 217.653.5330

picnicperfect + fun tidbits

- 1 BEN BUMBRY RIVERVIEW PARK** 1001 N 2ND
named for the late Mr. Bumbry, a beloved Quincy, talented jazz musician, educator and the first African-American on Quincy City Council
- 2 CLAT ADAMS BICENTENNIAL PARK** 201 N FRONT
cable suspension bridge cost \$32 million and is 4,500 feet long
- 3 IL VETERANS HOME (DEER PARK)** 1707 N 12TH
"the city within a city", the oldest veteran's home in Illinois
- 4 MADISON PARK** 2400 MAINE ST
read about Quincy's best known Underground Railroad site that sits just north of the park (part of the Mission Institute)
- 5 MOORMAN PARK COMPLEX** 1608 MOORMAN PARK
your dog can get free pupccinos here!
- 6 SOUTH PARK/STONE ARCH BRIDGE** 1600 S 8TH
87 feet long, bridge built in 1899 for \$5,600 and still used today
- 7 SUNSET PARK** 200 CEDAR
sunsets have been viewed here for 114 years!
- 8 VILLA KATHRINE PARK** 532 GARDNER EXPY
castle built for \$7000 in 1900... look for all the key hole designs thevillakathrine.org
- 9 WASHINGTON PARK** 101 N 5TH
over 12,000 people came to see Abe Lincoln debate Stephen Douglas here in 1858 (Lincoln is still the tallest U.S. President on record at 6' 4" tall)

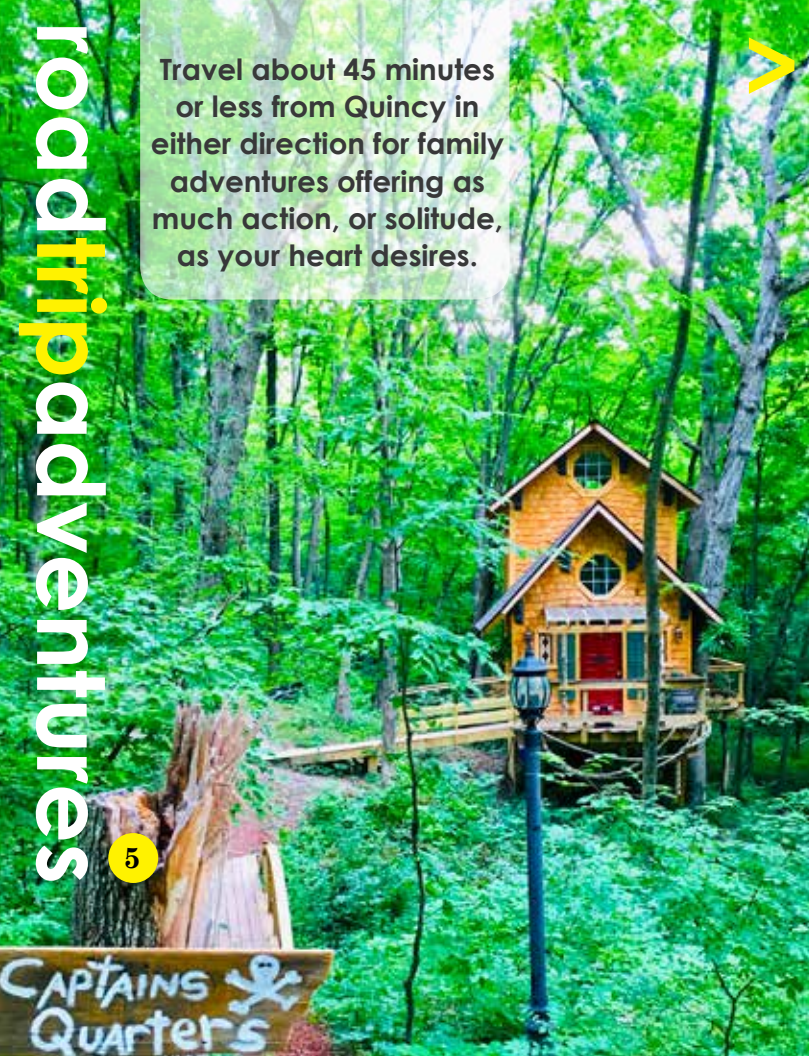


Travel about 45 minutes or less from Quincy in either direction for family adventures offering as much action, or solitude, as your heart desires.



north

- 1 **GREAT RIVER ROAD** experiencemississippiriver.com
 > the best & longest scenic drive in America
 > 1938 north-south national byway tracing the Mississippi
 > green & white paddle wheel signs guide the way
- 2 **HISTORIC NAUVOO** 217.453.6648 beautifulnauvoo.com
 > "historic little city on the Mighty Mississippi"
 > walking tours, shows, oxen or horse-drawn tours,
 > living historic district (most activities are free!)
- 3 **NAUVOO LOG CABINS** 65 NORTH WINCHESTER ST
 217.453.9000 nauvoologcabins.com
 > rustic authentic handbuilt pioneer log cabins
 > state-of-the-art new cabins
- 4 **NAUVOO STATE PARK** 980 BLUFF ST | 217.453.2512
 > on the Mississippi River banks
 > 13-acre lake with mile-long shoreline
 > fishing, boating, camping, hiking
- 5 **TEN ACRE TREE HOUSES** 1825 N COUNTY RD 900
 NAUVOO | 217.440.8006 tenacreetreehouses.net
 > 2-story tree houses with panoramic views
 > rebuilt 200-yr old log home
- 6 **URSA CREEK LODGE RURAL URSA** | 217.653.6536
ursacreeklodge.com
 > 3-bedroom retreat with stone fireplace | wrap-around deck
 > built over a former railroad bridge



< south


- 1 **ABE LINCOLN'S TALKING HOUSES** pikelincoln.com
 224 W WASHINGTON | PITTSFIELD | 217.285.2971
 > driving audio tour of 15 Lincoln-significant buildings
 > tour may be started at the visitors center (above)
- 2 **HEARTLAND LODGE** heartlandlodge.com
 10236 393RD ST | NEBO | 217.734.2526
 > premier lodge resort | 1500 acres | Mississippi River Valley
 > hike, bike, horseback, polaris utv | 80 miles of trails
- 3 **LAKE PITTSFIELD** pittsfieldil.org 217.285.4484
 2 MILES EAST OF US 54 & 1.5 MILES NORTH OF IL 106
 > 480-acre recreational park | 200-acre lake | boating
 > fishing | hiking | camping | tennis | softball | soccer
- 4 **SILOAM SPRINGS STATE PARK** 938 E 3003RD LN
 CLAYTON | 217.894.6205 dnr.state.il.us
 > 3,300-acre site | lake | boat rentals | fishing | hiking
 > camping | picnicking | bird-watching
- 5 **SPRAGUE'S KINDERHOOK LODGE** kinderhooklodge.com
 22168 STATE HWY 106 | BARRY | 217.432.1090
 > an Illinois Bed & Breakfast | unique lodge retreat center
 > stone fireplaces | 2 dining halls | top-rated meals
- 6 **YOGI BEAR'S JELLYSTONE PARK AT PINE LAKES**
 1405 LAKEVIEW HEIGHTS | PITTSFIELD
 217.285.6719 jellystonepinelakes.com
 105-acre campground | 45-acre stocked lake | boat rentals
 > fishing | beach swimming | hiking | cottages | camping



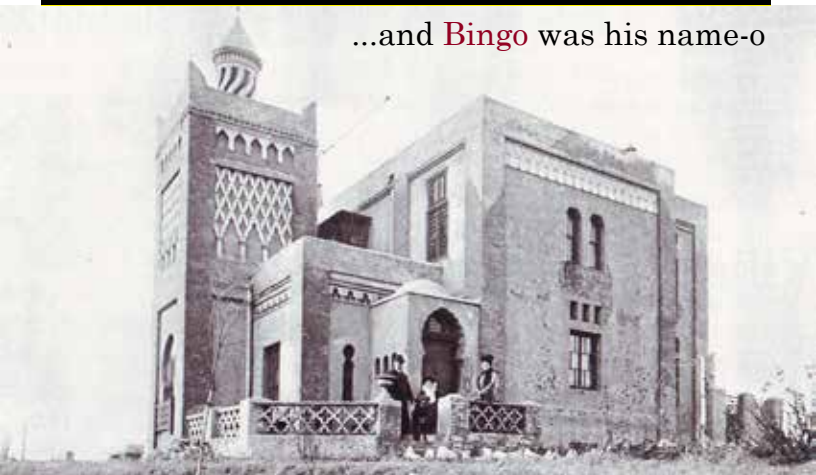
we ♥

BINGO

open air spaces
nature finds/farms
outdoor culture
indoor discoveries
sweet treats

				
		FREE SPACE		

...and **Bingo** was his name-o



Come to the Villa Kathrine castle and learn about the owner's dog, Bingo, who was said to be the largest dog in the world in 1900.

The Villa is a real castle that was sketched out by and built for world traveler, George Metz. Bingo was a Bullmastiff and king of the castle! He was George's best friend. It's also said that Bingo wore a diamond-studded collar, which might be buried on the grounds of the Villa...

How to play our we ♥ B-I-N-G-O game:

- > fill in your card with the corresponding numbers of the places you visit as you go (5 vertical, horizontal or diagonal)
- > show it at the Villa (also Quincy's Tourist Info Center + offices of SeeQuincy (or mail/email pic of it to the address below)
- > claim your prize~a Quincy frisbee!

SeeQuincy | 532 Gardner Expy | Quincy, IL 62301
800.978.4748 | email: info@seequincy.com

