

Smile you're on the Maine Street Mile

QUINCY IL



The 60-minute tour of Quincy's most notable thoroughfare

- > 15 stops along magnificent Maine Street
 - > Washington Park to Madison Park
- > Explore the city's oldest parks and experience the cultural & culinary wonders in between

Drive, walk, or bike-it > BIKE QUINCY RENTALS

Affordable hourly/daily rates/tandem or treks/800.978.4748

enjoy
illinois

SEE QUINCY.COM

SmileMile art architecture nature history shopping dining



1

332 MAINE THE HISTORY MUSEUM

- Quincy's original public library; built 1888
- Anchors Maine Street & Washington Park
- Exhibits, stained glass gallery, gifts

hsqac.org 217.214.1888

Quincy's founder, John Wood, welcomes from the southwest corner



2

4TH-5TH & MAINE WASHINGTON PARK

- Quincy's first park, "John's Square"; est. 1825
- 1858 Lincoln-Douglas Debate site
- Lincoln storyboards & plaza
- Blues concerts, farmers market, festivals

thedistrictquincy.com

217.228.8696

12,000 attendees gathered at the sixth of the "Great Debates of 1858"



3

626 MAINE PEDESTRIAN ALLEY

- Mid-mod corridor established in 1961
- Two-toned blue paint now adorns the walkway which connects parking to The District businesses yet today

thedistrictquincy.com

217.228.8696

Visit seequincy.com to peruse Shop Vintage Quincy Guide



4

6TH-10TH & MAINE SHOPPING & DINING

- Locally-owned boutique shops
- Eateries... pizza, ice cream, coffee, fine dining
- Bars... mom & pop, high-end cocktails
- Free lunchtime Concerts in the Plaza (6th-7th & Maine)

seequincy.com

800.978.4748

Flavor Tours Sat, June-Sept seequincy.com



5

7TH & MAINE (117 N 7TH) ST BONIFACE

- Designed in 1962 by architect John Benya
- On the 150 Most Significant Structures in IL list
- Mass site of Father Tolton, America's first Catholic Black priest
- Potawatomie Trail of Death marker

seequincy.com

800.978.4748

160-ft steel steeple shell with stainless steel interior

6

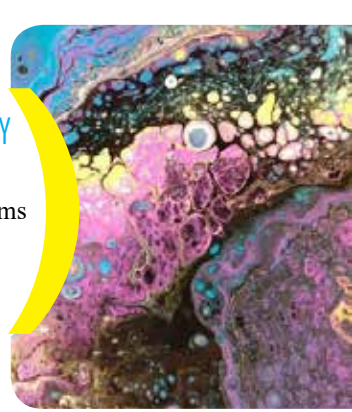
901 MAINE THE DISTRICT ART GALLERY

- Featuring works by local artists
- Hands-on classes in a variety of mediums
- Rotating exhibits + artwork for sale

thedistrictartgallery.net

217.228.1989

Want more art? 24 murals in Mural Find + Dine Guide seequincy.com



7

12TH & MAINE FIRST UNION CHURCH

- Founded by Asa & Martha Turner, originally meeting in a cabin on the Mississippi
- This location was established in 1873, with the newer structure built in 1970

firstunionquincy.org

217.222.3346

Quincy's first church, founded 1830



8

1416 MAINE QUINCY JUNIOR HIGH

- Venetian Gothic built in 1929 for \$1.3M
- Mosaic details enscripted on interior walls
- Originally Quincy's Senior High
- Home of the elaborate Morrison Theatre with a capacity of 2,000

Originally sported a swimming pool in the basement



9

1449 MAINE ISAAC & ELLEN LESEM HOUSE

- Built for a dry goods entrepreneur and noted civic & religious leader
- Exuberant high-style Queen Anne
- Architect, Harvey Chatten; built 1890

See Abundant Architecture Guide for full driving tour seequincy.com



10

1469 MAINE DRICUS & FANNY SNITJER HOUSE

- One of Quincy's most photographed houses
- French Second Empire style
- Architect, John Mckean; built 1876
- Used as a college prep school in 1900

Author Samuel Clemens on record as a patron of the prep school





11

1550 MAINE LORENZO BULL HOUSE/ 1515 JERSEY QUINCY ART CENTER

- Bull House built for a prominent financier in the Italian Villa style in 1852
- Today home to the Women's City Club (217.222.2578) with original carriage house part of the Quincy Art Center (*rear of City Club*) quincyartcenter.org 217.223.5900



12

1601 MAINE NEWCOMB-STILLWELL MANSION

- 20,000-sq-ft home built for Richard Newcomb, one of four millionaires in Quincy at the time of his death in 1904
- Once housed a bowling alley in basement
- Now Quincy Museum: tours & exhibits thequincymuseum.org 217.224.7669



13

1680 MAINE EDWARD PRINCE HOME

- 6000-sq-ft Romanesque home built for Colonel Edward Prince in 1883
- One of 17 homes in **Private Home Tours of Quincy**-- customized for groups of 6+ seequincy.com 800.978.4748



14

2084 MAINE FREDERICK & ANNA WILMS HOUSE

- 7500-sq-ft Neoclassical Revival
 - Built in 1910 for Wilms, President of Wabash Coal Company
 - Opulent interior with freestanding staircase, Italian marble fireplaces and wine cellar
- airbnb.co.inrooms/46677203



15

24TH & MAINE MADISON PARK

- Established in 1867, a commemorative spot for the Underground Railroad in Quincy
 - Shelter house, Ga Ga Ball Pit, tennis courts, playground & free Quincy Park Band concerts
- quincyparkdistrict.com 217.223.7703

go rogue

800.978.4748

SEEQUINCY.COM